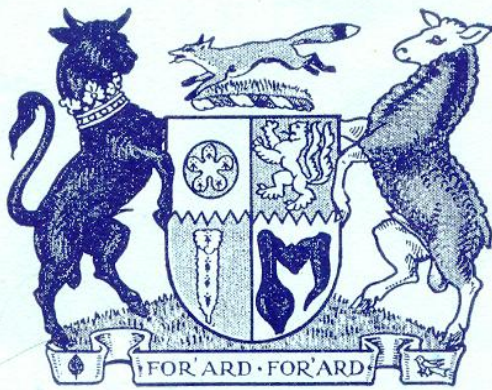


**COUNTY OF LEICESTER
EDUCATION COMMITTEE**



**OPENING
OF THE
HINCKLEY WESTFIELD
COUNTY INFANTS' SCHOOL**

BY

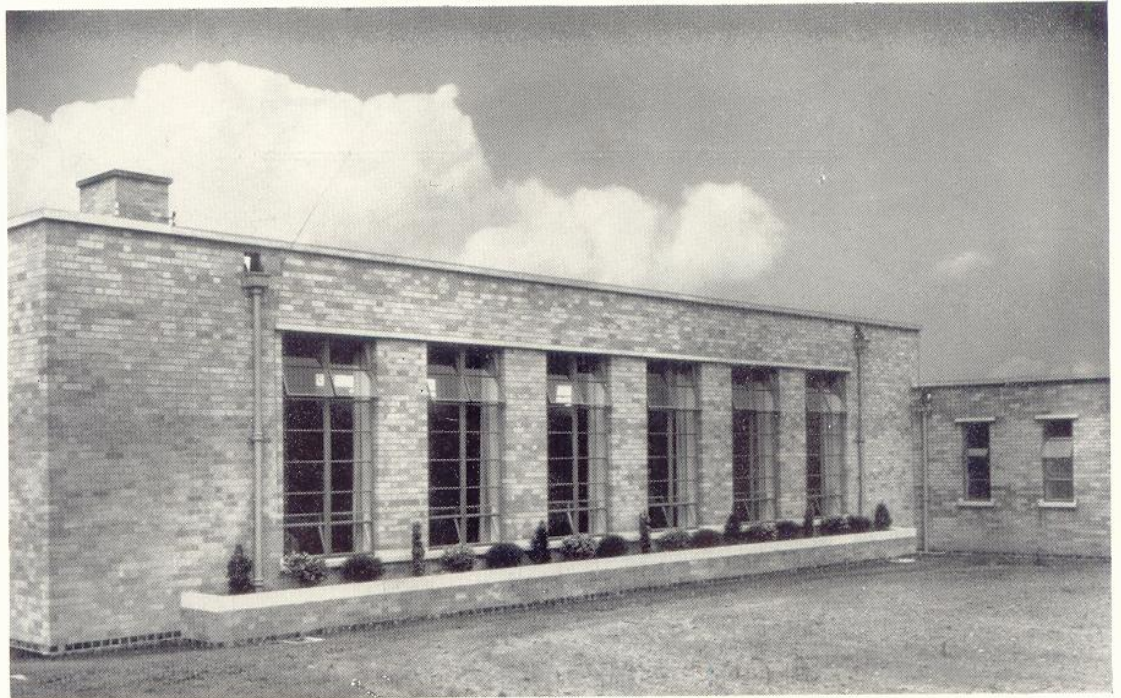
Mrs. H. P. ATKINS, J.P.

at 2-30 p.m.

on WEDNESDAY, 16th JULY, 1952

Order of Proceedings

1. Assembly in School Hall.
2. Prayer—Rev. E. J. Hay Hicks, Holy Trinity Vicarage, Hinckley.
3. Introductory remarks by Lieut.-Colonel Sir Robert Martin, C.M.G.,
Chairman of the County Education Committee.
4. Three Songs:
 - (a) Blackfriars
 - (b) Old Mother Hubbard
 - (c) Mayfair
5. Statement by S. C. Mason, M.A., Director of Education.
6. The School declared open by Mrs. H. P. Atkins, J.P.
7. Two Songs with Percussion Band:
 - (a) Buy a Broom
 - (b) Oranges and Lemons
8. Vote of thanks to Mrs. Atkins by Mrs. M. Bainton, Member of
School Managing Body.
9. Inspection of Building—plan on page 4.



HINCKLEY WESTFIELD COUNTY INFANTS' SCHOOL

THE Education Committee's Development Plan for Primary and Secondary Education under the Education Act, 1944, foreshadowed the building in Hinckley of three new infants' schools, described in the language of educational requirements as two-form entry schools; that means schools designed to admit each year two classes of about 40 children each and holding in all 200 to 240 pupils. The Westfield Infants' School is the second of these schools. As a result of its opening the former Westfield Primary School has become a school for junior children and will receive them from the Infants' School at about the age of seven.

The new school has been planned so that all the teaching rooms have a southerly aspect and have french windows leading on to a terrace which will be used for outdoor teaching when weather permits. The playground and noisy sections of the building are sited on the north side so that the teaching rooms are free from distraction.

The accommodation consists of six classrooms, assembly hall (also used for dining), staff rooms, medical inspection room, cloakroom and lavatories. In addition to the teaching accommodation, the school has a well equipped kitchen. There is a supply of hot water for all sinks and lavatory basins and the heating of the building is by low pressure hot water system.

The building is of single storey construction, having brick walls and flat roofs of concrete covered with bituminised felt and tarmacadam. Window frames are galvanised steel.

The colour scheme of the school has been chosen to give a harmonious and cheerful effect without being ostentatious. The dadoes to lavatories and kitchen are in glazed tiles.

The school garden is situated adjoining the school playground and contains a lawn, shrubs and flower garden.

The School was designed by the late Mr. E. G. Fowler, F.R.I.B.A., Architect to the Education Committee. The building of the School was supervised by Mr. T. A. Collins, A.R.I.B.A., the County Architect. The General Contractors were Messrs. Wm. Moss & Sons Ltd., of Queens Road, Loughborough.

The sculpture of the bear, an anonymous gift to the school, was designed and executed in Clipsham Stone by Mrs. Karin Jonzen.



